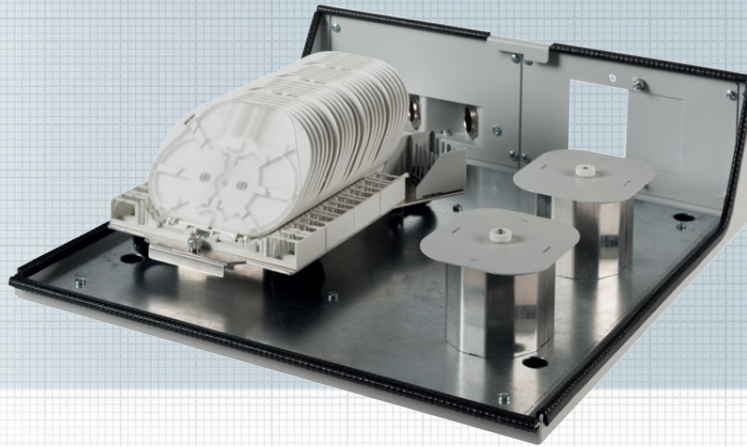


# H.D.S. splice wall distributor for up to 288 fibers



H.D.S. splice wall distributor for mounting on walls, under false floors or suspended ceilings. Depending on your requirements, the splice wall distributor is pre-assembled with splice cassettes. 12 splices are provided for each splice cassette. The cassettes are installed to be browsed. The boxes can be locked with a lock.

The H.D.S. splice wall distributor offers the highest possible flexibility in the splice area. The FO cable ends at the usage point without including the rigid FO cable in the cabinet cabling. Now, there is an FO transfer point in the computer center or at the usage location. The FO cables that are in part very rigid will be collected at one point and will be connected in the H.D.S. splice wall box with the required FO patch points through flexible but extremely stable H.D.S. FO cables. In case of later installations, the FO links already in operation will almost not be influenced. Based on the proven splice cassette, which can be browsed, it is guaranteed that the already existing splice connections continue to exist reliably.

## Specifications:

Material	Steel sheet zinc coated powder coated
Color	gray, RAL 7035
Dimensions	495 x 435 x 133 mm
Cover	powder coated
Locking	1 lock
Cable inlet:	
FO route cable	M-screw connection straight or angled
FO module feed	Feed comb with cable binder strain-relieved
Design	24x splice cassettes, 1 x cable feed comb 2 x M20 screw connection straight 1 x lock

## Designation

H.D.S. splice wall distributor with 24 splice cassettes (for up to 288 fibers)  
H.D.S. splice cassettes set 6ers

## Order number

xxxxxxx  
LVZSKC06