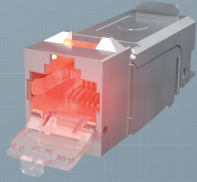
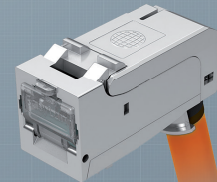


preLink® RJ45 Keystone Kat. 6, ISO/IEC  
CKPAS011 (Solid-Variante)  
CKPAS021 (Flex-Variante)



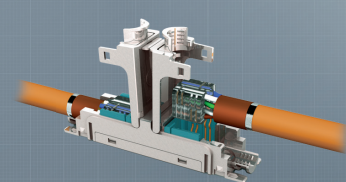
preLink® RJ45 Keystone L.E.O. Kat. 6A EIA/TIA  
CKLES010 (Solid-Variante)  
CKLES020 (Flex-Variante)



preLink® RJ45 Keystone gewinkelt Kat. 6, ISO/IEC  
CKWAS011 (Solid-Variante)  
CKWAS021 (Flex-Variante)



preLink® RJ45 Steckermodul Kat. 6, ISO/IEC  
CKSAO100



preLink® Extender Kat. 6, ISO/IEC  
CKEA0100 (Solid-Variante)

### Modulträger SL



1-fach  
CKVDUSL1R

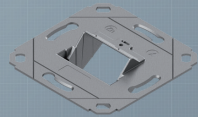


2-fach  
CKVDUSL2R

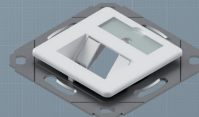


3-fach  
CKVDUSL3R

### Designfähige Modulträger



1-/2-fach ohne Zentralplatte  
CKVD1DS

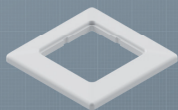


1-fach mit Zentralplatte  
CKVD1D2

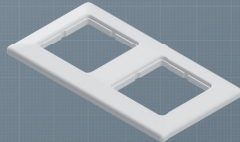


2-fach mit Zentralplatte  
CKVD1D1

### Rahmen für Modulträger



1-fach  
ADZ00102

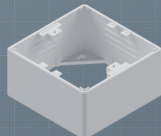


2-fach  
ADZ00103

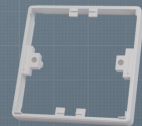
### Aufputz Modulträger



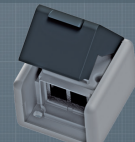
2-fach gerade  
CKVDU292



Aufputzbecher  
CKVDAP90



Tiefenerweiterung 10 mm  
CKVDDR90



Modulaufnahme IP44  
CKVDAP92

### Bodentankträger



OBO Trägerplatte GB2  
ABG00011



OBO Trägerplatte GB3  
ABG00012



Adapter  
für Electraplan  
ABG00017



Einbauplatte 3x Keystone  
ABG00016



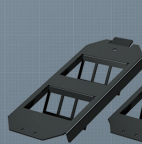
Einbauplatte 4x Keystone  
ABG00014



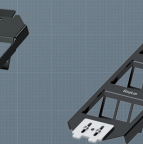
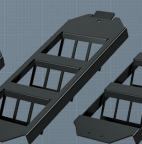
Blindplatte  
ABG00013



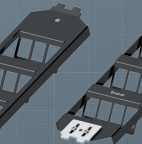
Zugentlastung  
ABG00018



Bodentankträger Basic GB2 2x3 | GB3 3x3 | GB3 3x4  
ABGEC023 | ABGEC033 | ABGEC034

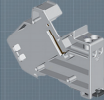


Bodentankträger Basic GB3 3x3  
ABGEC033



Bodentankträger Basic GB3 3x4  
ABGEC034

### Hutschienenmodule



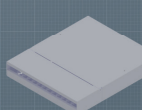
Verteilerschranke  
CKVHMOD



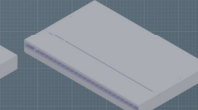
Schalterschranke  
CKVHECOMOD



Seitenabdeckung  
CKVHECOSIL



10" modular für 12x Keystone  
CPPF01KS1E



19" modular für 24x Keystone  
CPPF09KS1E

### Modulare Consolidation Point Gehäuse

### Consolidation Point Gehäuse



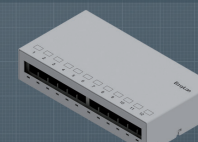
4-fach  
CKVPL0041E



6-fach  
CKVPL0061E

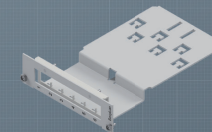


8-fach  
CKVPL0081E

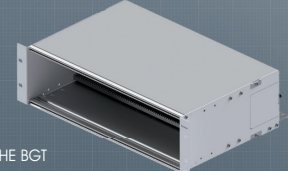


12-fach  
CKVPL0121E

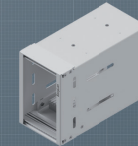
### Baugruppenträger (BGT)



Einschubmodul für BGT  
CVE000001E



3 HE BGT  
AVM10003



Side BGT  
AVM10001E



1 HE BGT  
AVM113001E

### Panel



0,5 HE gerade  
CKVPL5FOEE

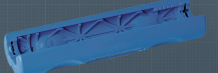


1 HE gerade  
CKVPL0101E



1 HE Winkelabgang  
CKVPL0W01E

### Trunkkabel



Abmantelwerkzeug  
CZABIBL1



Kupferband  
CZCUBT20



Staubschutzkappen